

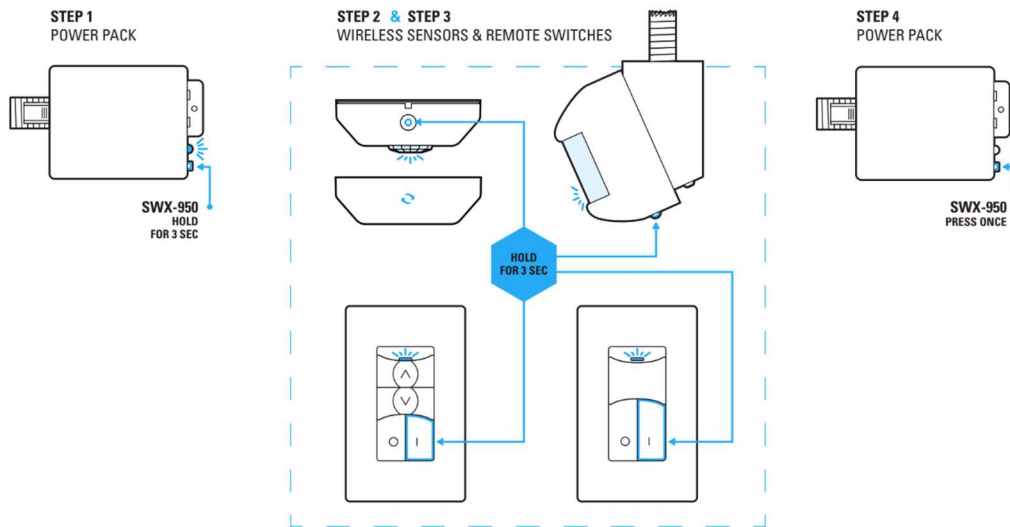


SENSORWORX®

COMPLIANCE DETAILS

SENSORWORX wireless products retain their configurations and pairing even during power loss. The programming is stored in non-volatile memory.

The simple pairing process is completed via our push-to-pair methodology:



In addition, when using a SWX-970, our free app can complete this pairing via a mobile device.

Regardless of method of pairing the system, configurations, time schedules, scenes, and pairing is stored in non-volatile memory. This ensures operations after prolonged power loss, regardless of length.

Anthony Lee

Head of Product

tlee@sensorworx.com



SENSORWORX

2a Research Pkwy, Wallingford, CT 06492

P: 203.678.4224 | **M:** 203.871.7378

www.sensorworx.com

Follow us on: **LinkedIn**



BLP Technologies, Inc.

2a Research Parkway, Wallingford CT 06492

P: 203.678.4224 | www.sensorworx.com