

## FEATURES & SPECIFICATIONS

**INTENDED USE** — The CPXR is designed to retrofit nearly any 1x4, 2x2, or 2x4 fluorescent lensed or parabolic troffer with normal dimensions and construction (see dimensional data). The standard kit is designed for T-grid mounted recessed units. Optional mounting brackets are available for drywall / "hard lid" ceilings or surface mounted housings. All CPXRs are UL rated for use in air-handling troffer housings. Integrated system bypasses all old fluorescent components for reliable, long-lasting performance. Certain airborne contaminants can diminish integrity of acrylic. [Click here for Acrylic Environmental Compatibility table for suitable uses.](#)

**CONSTRUCTION** — Universal end brackets are painted steel and are designed to fit securely in nearly any 2x4, 2x2, or 1x4 troffer housing (see dimensional requirements). Unitized doorframe, lens, and electrical chassis does not require field assembly and is optimized for long-lasting performance and uniformity. All electrical and mechanical components can be accessed from below the ceiling plane.

**ELECTRICAL** — Direct-lit panel kit uses long-life high quality LEDs along with high-efficiency drivers for extended service life. Illumination exceeds 80% LED lumen maintenance at 60,000 hours (L80 >60,000). Calculated L70 lumen maintenance greater than 150,000 hours. 0-10V dimming driver standard (dims smoothly to 1%)

**LISTINGS** — UL/cUL Listed (retrofit classification) for use in fluorescent fixtures. IP5X Rated. Classified for use in both static and air-handling troffer housings (see installation instructions). Installing CPXR assemblies per instructions will not impact existing fixture UL listing. Tested to LM80 standards.

DesignLights Consortium (DLC) Premium qualified product and DLC qualified product. Not all versions of this product may be DLC Premium qualified. Please check the DLC Qualified Products List at [www.designlights.org/QPL](http://www.designlights.org/QPL) to confirm product qualification.

**WARRANTY** — 5-year limited warranty. This is the only warranty provided and no other statements in this specification sheet create any warranty of any kind. All other express and implied warranties are disclaimed. Complete warranty terms located at: [www.acuitybrands.com/support/warranty/terms-and-conditions](http://www.acuitybrands.com/support/warranty/terms-and-conditions)

**Note:** Actual performance may differ as a result of end-user environment and application.

All values are design or typical values, measured under laboratory conditions at 25 °C.

The product images shown are for illustration purposes only and may not be an exact representation of the product.

Specifications subject to change without notice.

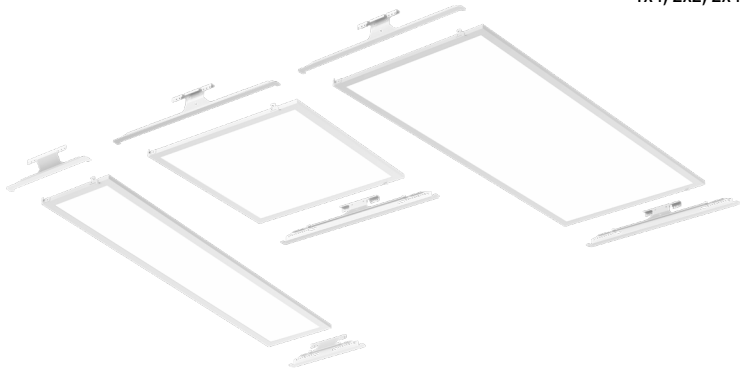
Catalog Number
Notes
Type

## CPXR

LED Panel-Style Retrofit Kit

Switchable Lumens and CCT

1x4, 2x2, 2x4



### ORDERING INFORMATION

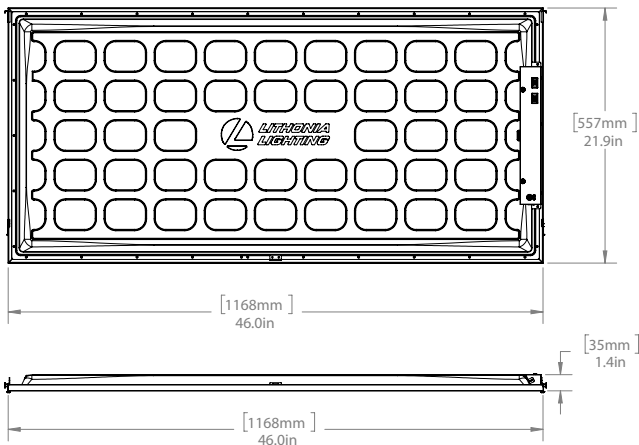
Catalog	UPC	Description	Lumens	Color Temperature	CRI	Voltage	Wattage	Efficacy	Pallet Qty.
CPXR 1X4 AL07 SSW7 M4	197589941555	1x4 Switchable Relight Kit	See Switchable Table	3500K/4000K/5000K	80	120-277	See Switchable Table	See Switchable Table	32
CPXR 2X2 AL07 SSW7 M4	197589941487	2x2 Switchable Relight Kit	See Switchable Table	3500K/4000K/5000K	80	120-277	See Switchable Table	See Switchable Table	32
CPXR 2X4 AL07 SSW7 M2	197589941425	2x4 Switchable Relight Kit	See Switchable Table	3500K/4000K/5000K	80	120-277	See Switchable Table	See Switchable Table	16
CPXR 2X4 AL08 SSW7 M2	197589941500	2x4 Switchable Relight Kit	See Switchable Table	3500K/4000K/5000K	80	120-277	See Switchable Table	See Switchable Table	16

# CPXR LED Panel-Style Retrofit Kit

## DIMENSIONS

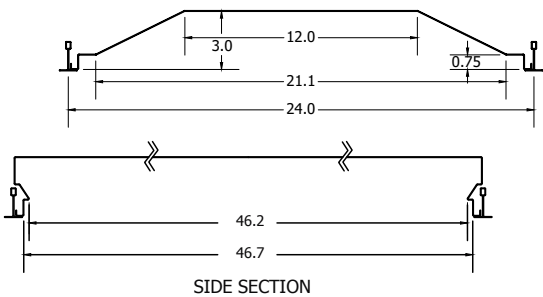
### CPXR 2X4

Length: 50.1"  
Width: 24.3"  
Depth: 2.4"  
Weight:  
Unit: 9.4lbs.  
Unit Carton: 12.2lbs



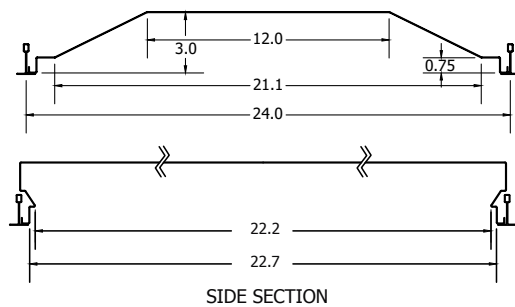
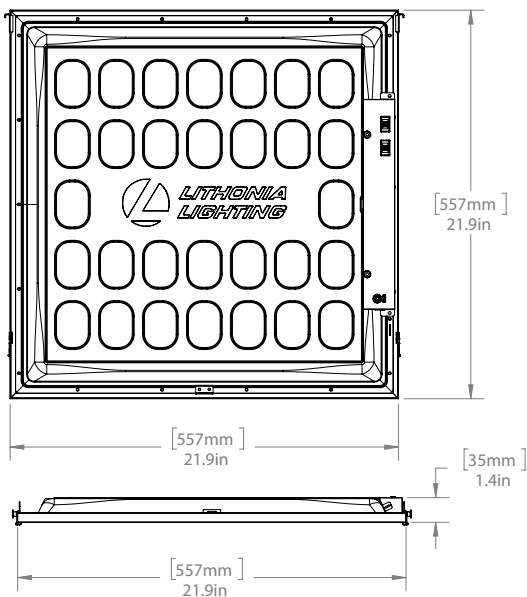
### FIT & COMPATIBILITY

The CPXR Relight Assembly was designed to upgrade recessed 2x4 fixtures, including most parabolic and lensed troffers from all major manufacturers. Dimensional requirements are below, but Lithonia Lighting recommends a trial installation prior to purchasing project quantities.



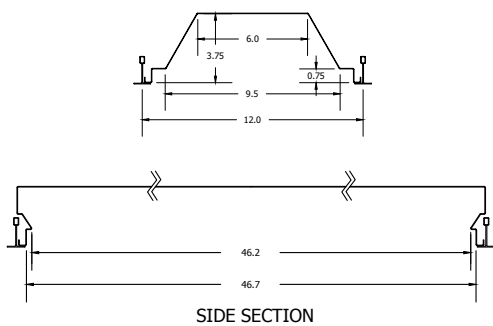
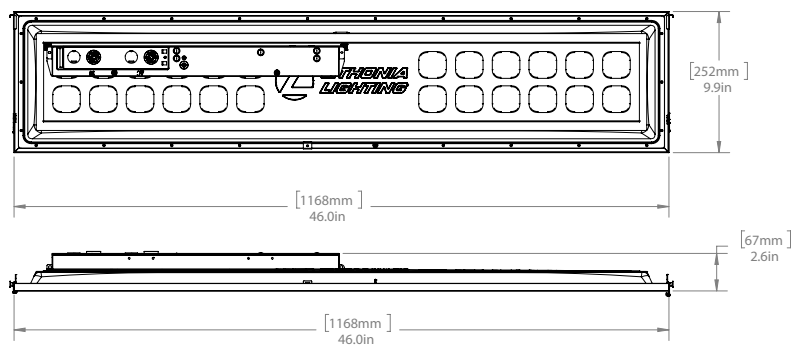
### CPXR 2X2

Length: 26"  
Width: 24.3"  
Depth: 2.4"  
Weight:  
Unit: 5.5lbs.  
Unit Carton: 7.4lbs



### CPXR 1X4

Length: 48.2"  
Width: 14"  
Depth: 2.4"  
Weight:  
Unit: 5.5lbs.  
Unit Carton: 8lbs



PERFORMANCE DATA

Size	Catalog Number	Lumen Output Switch Settings	CCT	Lumen	Input Wattage	LPW
2x4 Energy Saving	CPXR 2X4 AL07 SWW7	Low	3500K	2130	16	137
			4000K	2171	15	143
			5000K	2219	15	145
		Medium	3500K	3067	23	134
			4000K	3159	22	143
			5000K	3166	22	142
		High	3500K	4007	29	140
			4000K	4131	28	150
			5000K	4036	28	142
2x4 High Lumen	CPXR 2X4 AL08 SWW7	Low	3500K	4126	29	144
			4000K	4298	28	155
			5000K	4141	29	144
		Medium	3500K	5115	37	138
			4000K	5385	36	151
			5000K	5174	37	140
		High	3500K	6009	46	130
			4000K	6355	44	145
			5000K	6064	46	132
2x2	CPXR 2X2 AL07 SWW7	Low	3500K	2088	15	135
			4000K	2130	15	141
			5000K	2097	15	136
		Medium	3500K	3008	23	133
			4000K	3092	22	141
			5000K	3015	23	134
		High	3500K	4008	32	127
			4000K	4233	30	142
			5000K	4059	31	130
1x4	CPXR 1X4 AL07 SWW7	Low	3500K	2366	17	138
			4000K	2471	17	149
			5000K	2412	17	141
		Medium	3500K	3286	25	132
			4000K	3495	24	146
			5000K	3352	25	135
		High	3500K	4011	31	128
			4000K	4255	29	146
			5000K	4075	30	134

Emergency Battery Delivered Lumens

Use the formula below to determine the delivered lumens in emergency mode

**Delivered Lumens = 1.25 x P x LPW**

**P** = Output power of emergency driver (10W for PS1055)

**LPW** = Lumen per watt rating of the luminaire.

Emergency Battery Pack Options - Field Installable (order separately from CPXR)

Battery Model Number	Wattage	Runtime (Minutes)	Lumen Output* @ 120 Lumens/Watt	Other
ILB CP07 2H A	7W	120	840	Storm Shelter/ 2-hour Runtime
ILB CP10 A	10W	90	1200	
ILBLP CP10 HE SD A	10W	90	1200	Title 20, Self Diagnostic
ILBLP CP15 HE SD A	15W	90	1800	Title 20, Self Diagnostic
ILB CP20 HE A	20W	90	2400	Title 20
ILB CP20 HE SD A	20W	90	2400	Title 20, Self Diagnostic
ILB CP10 HE AELR A	10W	90	1200	Title 20; Enabled with Self Testing, Automated Reporting (STAR)

All the above are UL Listed products that are certified for field install external/remote to the fixture.  
\*Minimum delivered lumen output to assist in product selection for increased fixture mounting height.  
The CP10 delivered emergency illumination outperforms legacy 1400 lumen fluorescent emergency ballast.  
Please contact us at [techsupport@iotaengineering.com](mailto:techsupport@iotaengineering.com) for any Emergency Battery related questions.