

## FEATURES & SPECIFICATIONS

**INTENDED USE** — The CPXR is designed to retrofit nearly any 1x4, 2x2, or 2x4 fluorescent lensed or parabolic troffer with normal dimensions and construction (see dimensional data). The standard kit is designed for T-grid mounted recessed units. Optional mounting brackets are available for drywall / "hard lid" ceilings or surface mounted housings. All CPXRs are UL rated for use in air-handling troffer housings. Integrated system bypasses all old fluorescent components for reliable, long-lasting performance. Certain airborne contaminants can diminish integrity of acrylic. [Click here for Acrylic Environmental Compatibility table for suitable uses.](#)

**CONSTRUCTION** — Universal end brackets are painted steel and are designed to fit securely in nearly any 2x4, 2x2, or 1x4 troffer housing (see dimensional requirements). Unitized doorframe, lens, and electrical chassis does not require field assembly and is optimized for long-lasting performance and uniformity. All electrical and mechanical components can be accessed from below the ceiling plane.

**ELECTRICAL** — Direct-lit panel kit uses long-life high quality LEDs along with high-efficiency drivers for extended service life. Illumination exceeds 80% LED lumen maintenance at 60,000 hours (L80 >60,000). Calculated L70 lumen maintenance greater than 150,000 hours. 0-10V dimming driver standard (dims smoothly to 1%)

**LISTINGS** — UL/cUL Listed (retrofit classification) for use in fluorescent fixtures. IP5X Rated. Classified for use in both static and air-handling troffer housings (see installation instructions). Installing CPXR assemblies per instructions will not impact existing fixture UL listing. Tested to LM80 standards.

DesignLights Consortium() (DLC) Premium qualified product and DLC qualified product. Not all versions of this product may be DLC Premium qualified. Please check the DLC Qualified Products List at [www.designlights.org/QPL](http://www.designlights.org/QPL) to confirm product qualification.

**WARRANTY** — 5-year limited warranty. This is the only warranty provided and no other statements in this specification sheet create any warranty of any kind. All other express and implied warranties are disclaimed. Complete warranty terms located at: [www.acuitybrands.com/support/warranty/terms-and-conditions](http://www.acuitybrands.com/support/warranty/terms-and-conditions)

**Note:** Actual performance may differ as a result of end-user environment and application.

All values are design or typical values, measured under laboratory conditions at 25 °C.

The product images shown are for illustration purposes only and may not be an exact representation of the product.

Specifications subject to change without notice.

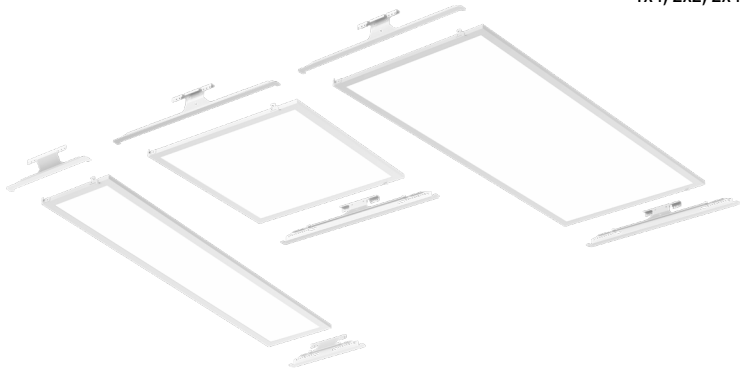
|                |
|----------------|
| Catalog Number |
| Notes          |
| Type           |

## CPXR

LED Panel-Style Retrofit Kit

Switchable Lumens and CCT

1x4, 2x2, 2x4



### ORDERING INFORMATION

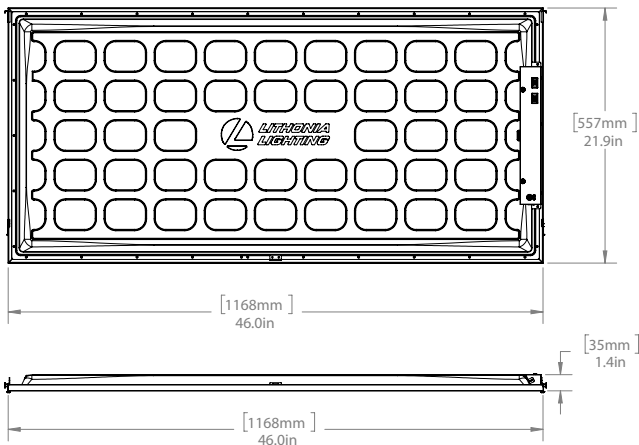
| Catalog               | UPC          | Description                | Lumens               | Color Temperature | CRI | Voltage | Wattage              | Efficacy             | Pallet Qty. |
|-----------------------|--------------|----------------------------|----------------------|-------------------|-----|---------|----------------------|----------------------|-------------|
| CPXR 1X4 AL07 SWW7 M4 | 197589941555 | 1x4 Switchable Relight Kit | See Switchable Table | 3500K/4000K/5000K | 80  | 120-277 | See Switchable Table | See Switchable Table | 32          |
| CPXR 2X2 AL07 SWW7 M4 | 197589941487 | 2x2 Switchable Relight Kit | See Switchable Table | 3500K/4000K/5000K | 80  | 120-277 | See Switchable Table | See Switchable Table | 32          |
| CPXR 2X4 AL07 SWW7 M2 | 197589941425 | 2x4 Switchable Relight Kit | See Switchable Table | 3500K/4000K/5000K | 80  | 120-277 | See Switchable Table | See Switchable Table | 16          |
| CPXR 2X4 AL08 SWW7 M2 | 197589941500 | 2x4 Switchable Relight Kit | See Switchable Table | 3500K/4000K/5000K | 80  | 120-277 | See Switchable Table | See Switchable Table | 16          |

# CPXR LED Panel-Style Retrofit Kit

## DIMENSIONS

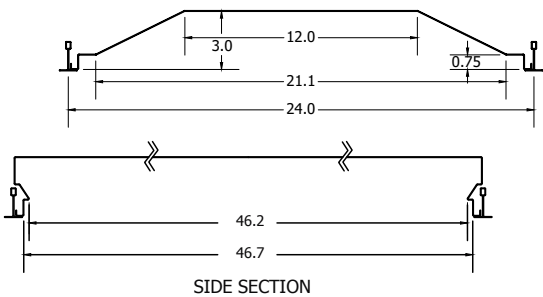
### CPXR 2X4

Length: 50.1"  
Width: 24.3"  
Depth: 2.4"  
Weight:  
Unit: 9.4lbs.  
Unit Carton: 12.2lbs



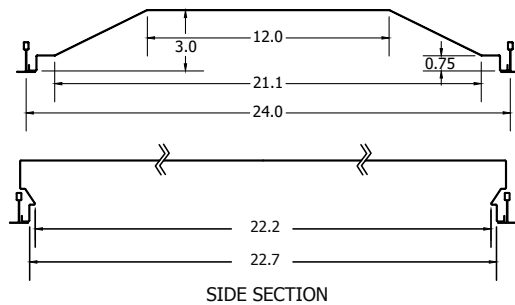
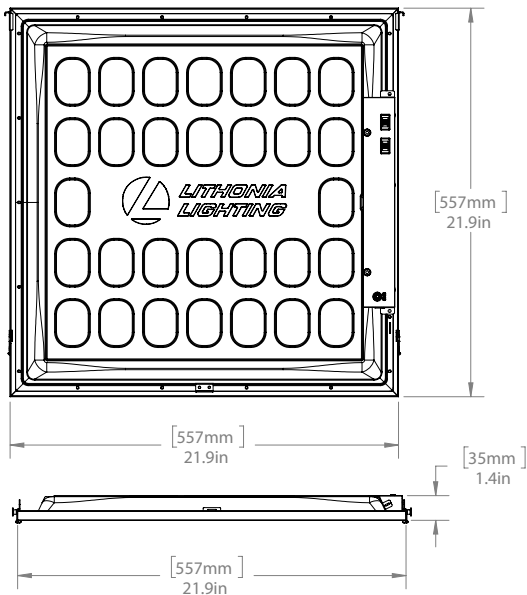
### FIT & COMPATIBILITY

The CPXR Relight Assembly was designed to upgrade recessed 2x4 fixtures, including most parabolic and lensed troffers from all major manufacturers. Dimensional requirements are below, but Lithonia Lighting recommends a trial installation prior to purchasing project quantities.



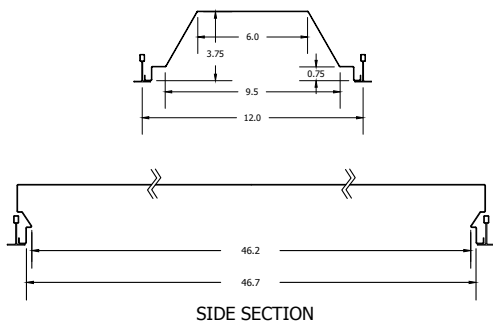
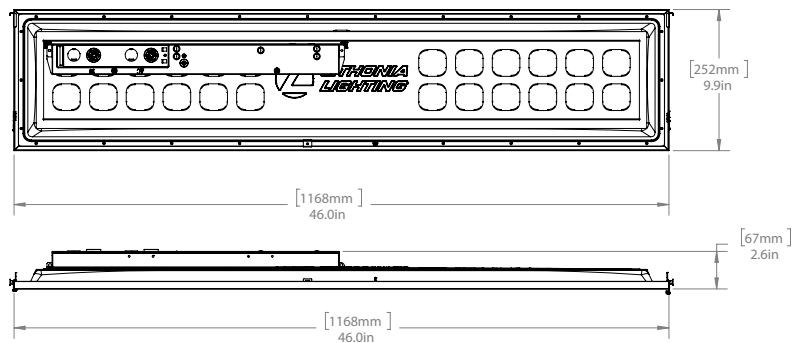
### CPXR 2X2

Length: 26"  
Width: 24.3"  
Depth: 2.4"  
Weight:  
Unit: 5.5lbs.  
Unit Carton: 7.4lbs



### CPXR 1X4

Length: 48.2"  
Width: 14"  
Depth: 2.4"  
Weight:  
Unit: 5.5lbs.  
Unit Carton: 8lbs



PERFORMANCE DATA

| Size                 | Catalog Number     | Lumen Output Switch Settings | CCT   | Lumen | Input Wattage | LPW |
|----------------------|--------------------|------------------------------|-------|-------|---------------|-----|
| 2x4<br>Energy Saving | CPXR 2X4 AL07 SWW7 | Low                          | 3500K | 2130  | 16            | 137 |
|                      |                    |                              | 4000K | 2171  | 15            | 143 |
|                      |                    |                              | 5000K | 2219  | 15            | 145 |
|                      |                    | Medium                       | 3500K | 3067  | 23            | 134 |
|                      |                    |                              | 4000K | 3159  | 22            | 143 |
|                      |                    |                              | 5000K | 3166  | 22            | 142 |
|                      |                    | High                         | 3500K | 4007  | 29            | 140 |
|                      |                    |                              | 4000K | 4131  | 28            | 150 |
|                      |                    |                              | 5000K | 4036  | 28            | 142 |
| 2x4<br>High Lumen    | CPXR 2X4 AL08 SWW7 | Low                          | 3500K | 4126  | 29            | 144 |
|                      |                    |                              | 4000K | 4298  | 28            | 155 |
|                      |                    |                              | 5000K | 4141  | 29            | 144 |
|                      |                    | Medium                       | 3500K | 5115  | 37            | 138 |
|                      |                    |                              | 4000K | 5385  | 36            | 151 |
|                      |                    |                              | 5000K | 5174  | 37            | 140 |
|                      |                    | High                         | 3500K | 6009  | 46            | 130 |
|                      |                    |                              | 4000K | 6355  | 44            | 145 |
|                      |                    |                              | 5000K | 6064  | 46            | 132 |
| 2x2                  | CPXR 2X2 AL07 SWW7 | Low                          | 3500K | 2088  | 15            | 135 |
|                      |                    |                              | 4000K | 2130  | 15            | 141 |
|                      |                    |                              | 5000K | 2097  | 15            | 136 |
|                      |                    | Medium                       | 3500K | 3008  | 23            | 133 |
|                      |                    |                              | 4000K | 3092  | 22            | 141 |
|                      |                    |                              | 5000K | 3015  | 23            | 134 |
|                      |                    | High                         | 3500K | 4008  | 32            | 127 |
|                      |                    |                              | 4000K | 4233  | 30            | 142 |
|                      |                    |                              | 5000K | 4059  | 31            | 130 |
| 1x4                  | CPXR 1X4 AL07 SWW7 | Low                          | 3500K | 2366  | 17            | 138 |
|                      |                    |                              | 4000K | 2471  | 17            | 149 |
|                      |                    |                              | 5000K | 2412  | 17            | 141 |
|                      |                    | Medium                       | 3500K | 3286  | 25            | 132 |
|                      |                    |                              | 4000K | 3495  | 24            | 146 |
|                      |                    |                              | 5000K | 3352  | 25            | 135 |
|                      |                    | High                         | 3500K | 4011  | 31            | 128 |
|                      |                    |                              | 4000K | 4255  | 29            | 146 |
|                      |                    |                              | 5000K | 4075  | 30            | 134 |

Emergency Battery Delivered Lumens

Use the formula below to determine the delivered lumens in emergency mode

**Delivered Lumens = 1.25 x P x LPW**

**P** = Output power of emergency driver (10W for PS1055)

**LPW** = Lumen per watt rating of the luminaire.

Emergency Battery Pack Options - Field Installable (order separately from CPXR)

| Battery Model Number | Wattage | Runtime (Minutes) | Lumen Output* @ 120 Lumens/Watt | Other   |
|----------------------|---------|-------------------|---------------------------------|---|
| ILB CP07 2H A        | 7W      | 120               | 840                             | Storm Shelter/ 2-hour Runtime                                   |
| ILB CP10 A           | 10W     | 90                | 1200                            |   |
| ILBLP CP10 HE SD A   | 10W     | 90                | 1200                            | Title 20, Self Diagnostic                                       |
| ILBLP CP15 HE SD A   | 15W     | 90                | 1800                            | Title 20, Self Diagnostic                                       |
| ILB CP20 HE A        | 20W     | 90                | 2400                            | Title 20  |
| ILB CP20 HE SD A     | 20W     | 90                | 2400                            | Title 20, Self Diagnostic                                       |
| ILB CP10 HE AELR A   | 10W     | 90                | 1200                            | Title 20; Enabled with Self Testing, Automated Reporting (STAR) |

All the above are UL Listed products that are certified for field install external/remote to the fixture.  
\*Minimum delivered lumen output to assist in product selection for increased fixture mounting height.  
The CP10 delivered emergency illumination outperforms legacy 1400 lumen fluorescent emergency ballast.  
Please contact us at [techsupport@iotaengineering.com](mailto:techsupport@iotaengineering.com) for any Emergency Battery related questions.